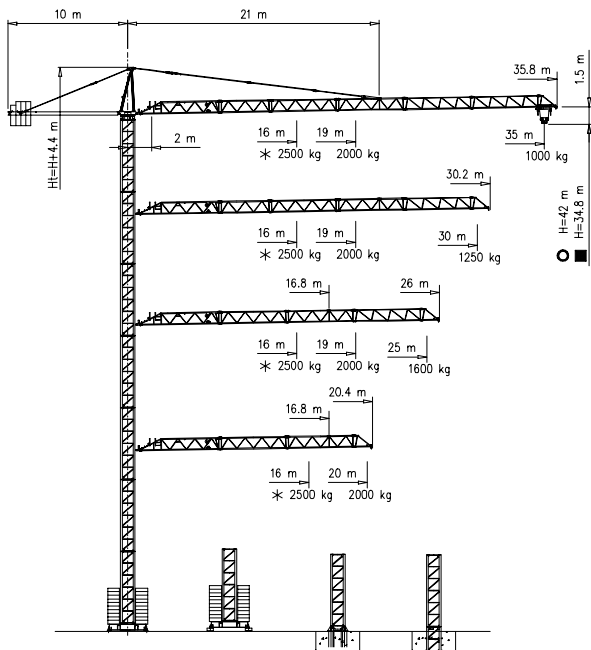




SCHEDE TECNICHE DEI SEGUENTI PRODOTTI

- 1035 CTY
- 1250 CTY

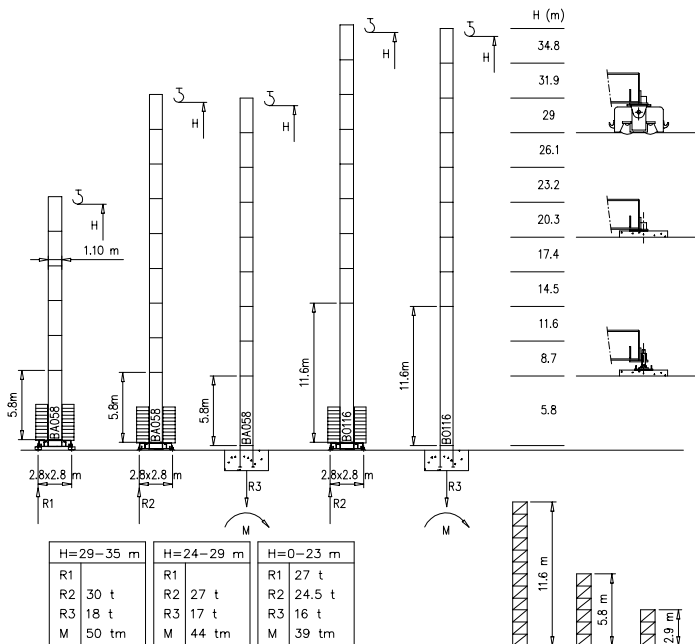


- S1100 - 1.10x1.10 m
- S1210 - 1.21x1.21 m
- * V15.40 - S15.40 - V20.60

Torre/Reazioni – Masts/Reactions – Mat/Réactions – Maste/Eckdrücke – Mástil/Reacciones – Tramo/Reacções

S1100

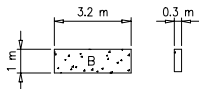
20 m → 35 m



Peso zavorra – Ballast weight – Poids du lest – Ballastgewicht – Peso de lastre



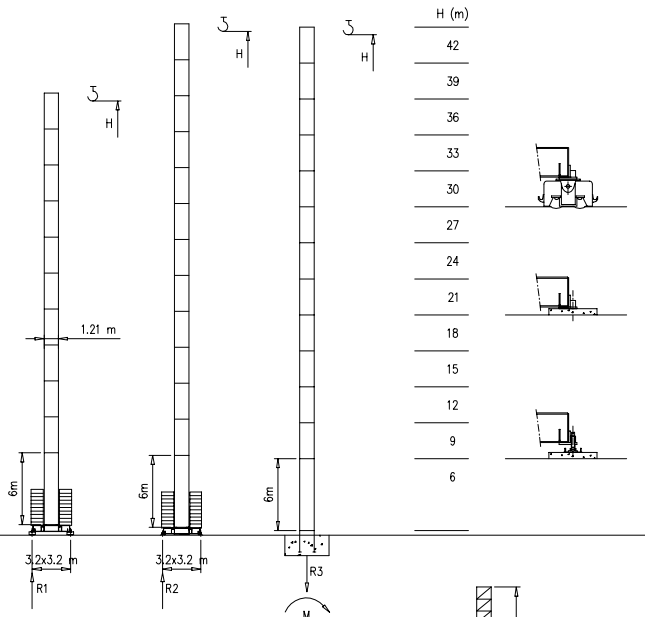
H	n*	Tot.
0–12 m	14 B	30800 kg
13–30 m	18 B	39600 kg
31–35 m	20 B	44000 kg



Torre/Reazioni – Masts/Reactions – Mat/Réactions – Maste/Eckdrücke – Mástil/Reacciones – Tramo/Reacções

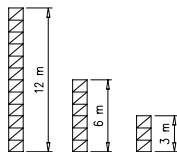
S1210

20 m → 35 m



H=24–42 m	
R1	
R2	47.5 t
R3	62 t
M	106 tm

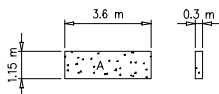
H=0–23 m	
R1	25 t
R2	25 t
R3	16 t
M	39 tm



Peso zavorra – Ballast weight – Poids du lest – Ballastgewicht – Peso de lastre



H	n°	Tot.
0–24 m	12 A	36000 kg
25–36 m	16 A	48000 kg
37–42 m	18 A	54000 kg



Curve di carico – Courbes de charges – Load diagrams – LastKurven – Curvas de cargas

Pmax 2000 kg

	6000 kg	35 m	2	19	22	24	26	28	30	32	34	35	m
			2000	2000	1680	1530	1400	1290	1190	1110	1030	1000	kg
	4950 kg	30 m	2	19	22	24	26	28	30				m
			2000	2000	1760	1600	1460	1350	1250				kg
	4950 kg	25 m	2	20	22	24	25						m
			2000	2000	1800	1640	1600						kg
	3300 kg	20 m	2	20									m
			2000	2000									kg



Pmax 2500 kg

	6000 kg	35 m	2	16	19	22	24	26	28	30	32	34	35	m
			2500	2500	2000	1680	1530	1400	1290	1190	1110	1030	1000	kg
	4950 kg	30 m	2	16	19	22	24	26	28	30				m
			2500	2500	2000	1760	1600	1460	1350	1250				kg
	4950 kg	25 m	2	16	20	22	24	25						m
			2500	2500	2000	1800	1640	1600						kg
	3300 kg	20 m	2	16	20									m
			2500	2500	2000									kg

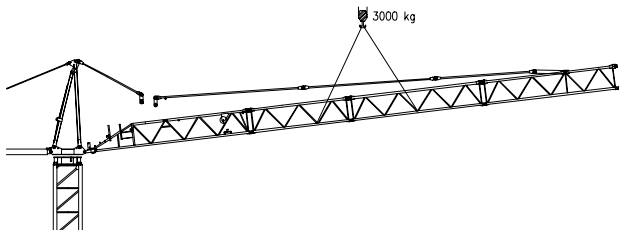
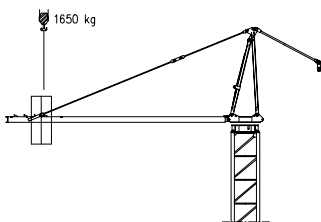
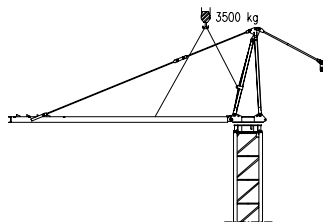
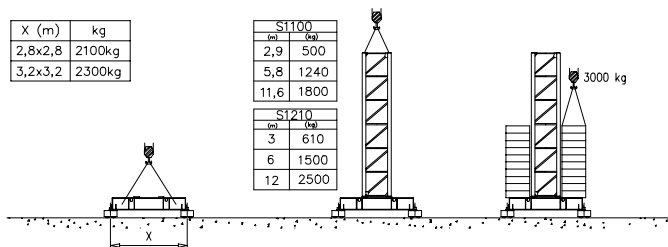


Montaggio – Montage – Erection – Montage – Montaje – Montagem

X (m)	kg
2,8x2,8	2100kg
3,2x3,2	2300kg

S1100	
(m)	(kg)
2,9	500
5,8	1240
11,6	1800

S1210	
(m)	(kg)
3	610
6	1500
12	2500



Meccanismi – Mechanisms – Mécanismes – Antriebe – Mecanismos

Sollevamento S9.30 e V10.30 Hoisting Levage Heben Elevaci3n Eleva3ao			1a 4 m/min 2000 kg	7 kW	S9.30
			2a 16 m/min 2000 kg		15 kVA
			3a 32 m/min 1000 kg		V10.30 13 kVA
Sollevamento S15.40 e V15.40 Hoisting Levage Heben Elevaci3n Eleva3ao			1a 4 m/min 2500 kg	11 kW	S15.40
			2a 20 m/min 2500 kg		21 kVA
			3a 40 m/min 1200 kg		V15.40 19 kVA
Sollevamento V20.60 Hoisting Levage Heben Elevaci3n Eleva3ao			1a 7 m/min 2500 kg	14.7 kW	V20.60
			2a 28 m/min 2500 kg		23 kVA
			3a 56 m/min 1200 kg		
Carrello Trolleying Distribution Katzfahren Distribuci3n Distribui3ao			1a OP 5 m/min 2500 kg	1.5 kW	Potenza elettrica necessaria Puissance électrique nécessaire Necessary electric power Anschlusswert Potencia
			2a 17 m/min 2500 kg		
			3a 34 m/min 1000 kg		
Rotazione Slewing Orientation Schwenken Orientaci3n Rota3ao			1a 0 → 0.2 giri/min	2.2 kW @ 1200rpm	
			2a 0 → 0.5 tr/min		
			3a 0 → 0.8 rp/min		
Traslazione Travelling Translation Kranfahren Traslaci3n Traslai3ao			1a 0 → 20	3.7 kW	

Rete elettrica – Réseau – Mains supply – Netzstrom – Red – Rede electrica

400V – 50 Hz



FMgrù s.r.l.

via Emilia 11-29010 Pontenure PC ITALY
tel. 0523/510446 ric.cab. fax 0523/510365
www.fmgrù.com e-mail: info@fmgrù.com

FEM 1.001
2000/14/CE



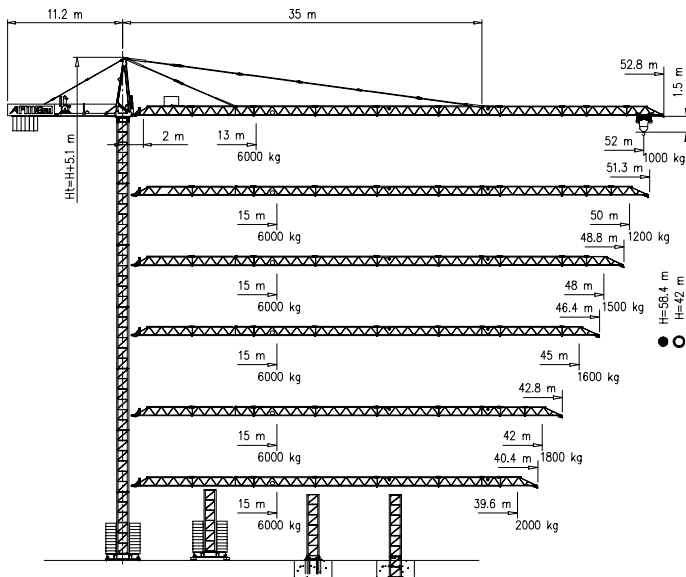
Documento commerciale non contraffatto
Per tutte le informazioni tecniche riferirsi
alle corrispondenti istruzioni

Unverbindliches Vertriebsdokument.
Für technische Informationen, siehe die
entsprechenden Anweisungen.

This commercial document is not legally
binding. For any technical information, please
refer to the corresponding instructions.

Documento comercial no contraffatto
Para cualquier informaci3n t3cnica,
ver la notici3 correspondiente.

Code:	15ICA37C2DA0
Ed.	Date
1	05.06.03 05.06.03

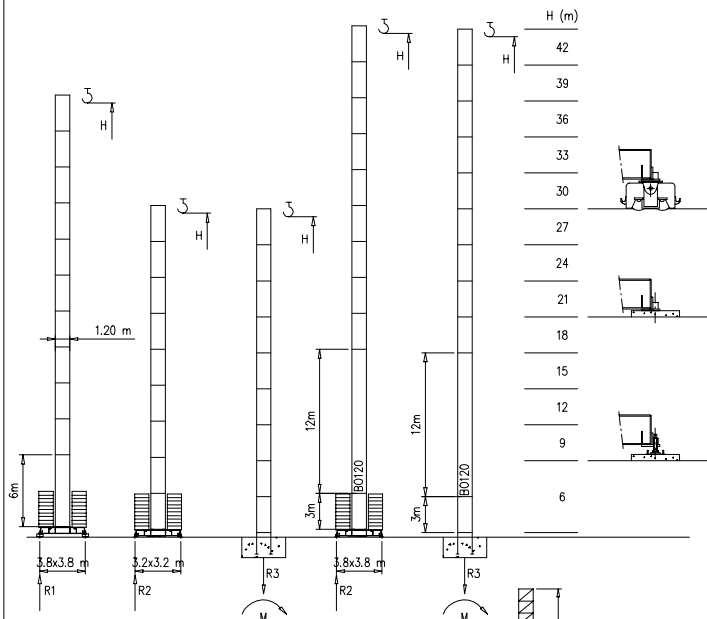


- S1210 - 1.21x1.21 m
- S1700 - 1.70x1.70 m

Torre/Reazioni - Masts/Reactions - Mat/Réactions - Masto/Eckdrücke - Mástli/Reacciones - Tramo/Reacções

S1210

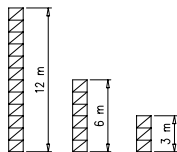
39.6 m → 50 m



H=37-42 m	
R1	55 t
R2	69 t
R3	44 t
M	185 tm

H=24-36 m	
R1	55 t
R2	55 t
R3	37 t
M	116 tm

H=0-23 m	
R1	45 t
R2	43 t
R3	39 t
M	101 tm

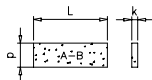


Peso zavorra - Ballast weight - Poids du lest - Ballastgewicht - Peso de lastre



3.8x3.8	H	n°	Tot.
	0-23 m	18 B	54000 kg
	24-36 m	20 B	60000 kg
	37-42 m	24 B	72000 kg

	A	B
L	3.6m	4.0m
k	0.3m	0.19m
d	1.15m	1.2m

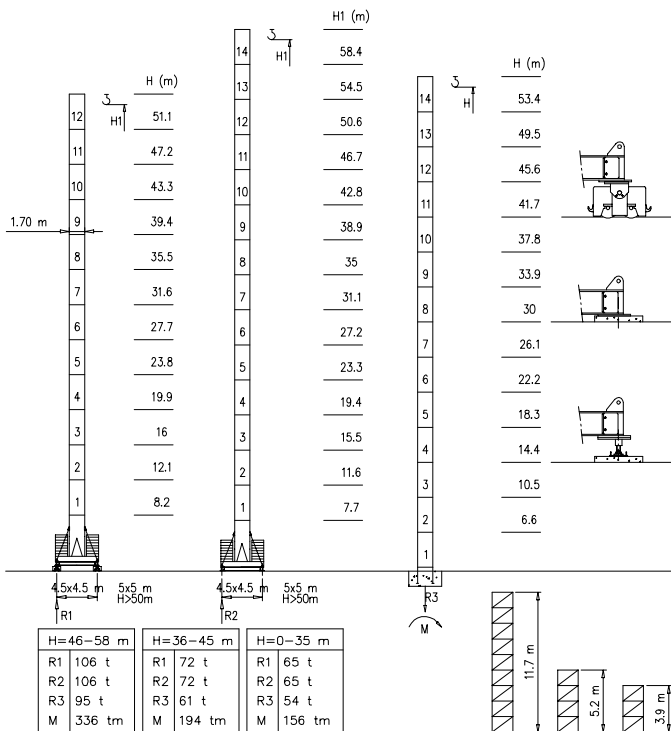


3.2x3.2	H	n°	Tot.
	0-27 m	18 A	54000 kg

Torre/Reazioni - Masts/Reactions - Mat/Réactions - Maste/Eckdrücke - Mástil/Reacciones - Tramo/Reações

S1700

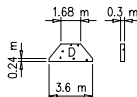
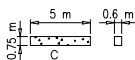
39.6 m → 50 m



Peso zavorra - Ballast weight - Poids du lest - Ballastgewicht - Peso de lastre



H	n*	Tot.
0-35 m	2C+ 18D	60800 kg
36-45 m	2C+ 22D	72000 kg
46-58 m	2C+ 32D	105000 kg



Curve di carico – Courbes de charges – Load diagrams – LastKurven – Curvas de cargas

Pmax 3000 kg

	14400 kg	52 m	2	22	24	26	28	30	32	34	36	38	40	42	44	46	48	52	m
			3000	3000	2790	2550	2350	2180	2020	1890	1770	1660	1570	1480	1400	1330	1260	1000	kg
	14400 kg	50 m	2	22	24	26	28	30	32	34	36	38	40	42	44	46	48	50	m
			3000	3000	2790	2550	2350	2180	2020	1890	1770	1660	1570	1480	1400	1330	1260	1200	kg
	14400 kg	48 m	2	2	26	28	30	32	34	36	38	40	42	44	46	48		m	
			3000	3000	2760	2560	2380	2230	2090	1960	1850	1750	1660	1580	1500			kg	
	14400 kg	45 m	2	2	26	28	30	32	34	36	38	40	42	44	45			m	
			3000	3000	2730	2530	2360	2200	2070	1940	1830	1730	1640	1600				kg	
	12000 kg	42 m	2	2	26	28	30	32	34	36	38	40	42					m	
			3000	3000	2830	2630	2450	2290	2190	2020	1900	1800							kg
	9600 kg	39.6 m	2	2	27	28	30	32	34	36	38	39.6							m
			3000	3000	3000	2890	2680	2500	2330	2190	2060	2000							

Pmax 6000/3000 kg

	14400 kg	52 m	2	13	16	18	20	22	24	26	28	30	32	34	36	38	40	42	44	46	48	52	m	
			6000	6000	4310	3810	3400	3000	2790	2550	2350	2180	2020	1890	1770	1660	1570	1480	1400	1330	1260	1000		kg
	14400 kg	50 m	2	13	16	18	20	22	24	26	28	30	32	34	36	38	40	42	44	46	48	50	m	
			6000	6000	4310	3810	3400	3000	2790	2550	2350	2180	2020	1890	1770	1660	1570	1480	1400	1330	1260	1200		kg
	14400 kg	48 m	2	15	16	18	20	22	24	26	28	30	32	34	36	38	40	42	44	46	48		m	
			6000	6000	5300	4440	3970	3590	3760	3000	2760	2560	2380	2230	2090	1960	1850	1750	1660	1580	1500			kg
	14400 kg	45 m	2	15	16	18	20	22	24	26	28	30	32	34	36	38	40	42	44	45			m	
			6000	6000	5200	4400	3930	3550	3230	3000	2730	2530	2360	2200	2070	1940	1830	1730	1640	1600				kg
	12000 kg	42 m	2	15	16	18	20	22	24	26	28	30	32	34	36	38	40	42					m	
			6000	6000	5400	4550	4070	3680	3360	3000	2830	2630	2450	2290	2190	2020	1900	1800						kg
	9600 kg	39.6 m	2	15	16	18	20	22	24	26	28	30	32	34	36	38	39.6							m
			6000	6000	5300	4640	4150	3750	3420	3130	2890	2680	2500	2330	2190	2060	2000							

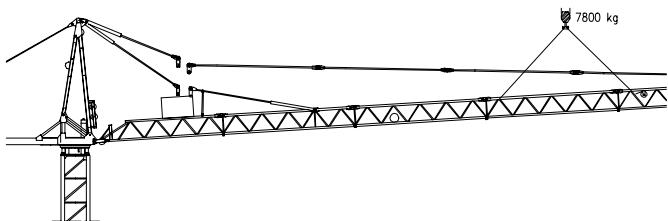
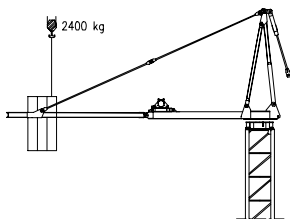
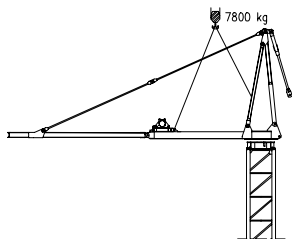
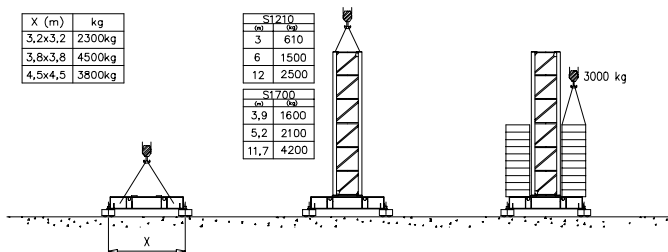
Pmax 6000 kg

	14400 kg	52 m	2	13	16	18	20	22	24	26	28	30	32	34	36	38	40	42	44	46	48	52	m	
			6000	6000	4310	3810	3400	3000	2790	2550	2350	2180	2020	1890	1770	1660	1570	1480	1400	1330	1260	1000		kg
	14400 kg	50 m	2	13	16	18	20	22	24	26	28	30	32	34	36	38	40	42	44	46	48	50	m	
			6000	6000	4310	3810	3400	3000	2790	2550	2350	2180	2020	1890	1770	1660	1570	1480	1400	1330	1260	1200		kg
	14400 kg	48 m	2	15	16	18	20	22	24	26	28	30	32	34	36	38	40	42	44	46	48		m	
			6000	6000	5300	4440	3970	3590	3760	3000	2760	2560	2380	2230	2090	1960	1850	1750	1660	1580	1500			kg
	14400 kg	45 m	2	15	16	18	20	22	24	26	28	30	32	34	36	38	40	42	44	45			m	
			6000	6000	5200	4400	3930	3550	3230	3000	2730	2530	2360	2200	2070	1940	1830	1730	1640	1600				kg
	12000 kg	42 m	2	15	16	18	20	22	24	26	28	30	32	34	36	38	40	42					m	
			6000	6000	5400	4550	4070	3680	3360	3000	2830	2630	2450	2290	2190	2020	1900	1800						kg
	9600 kg	39.6 m	2	15	16	18	20	22	24	26	28	30	32	34	36	38	39.6							m
			6000	6000	5300	4640	4150	3750	3420	3130	2890	2680	2500	2330	2190	2060	2000							

X (m)	kg
3,2x3,2	2300kg
3,8x3,8	4500kg
4,5x4,5	3800kg

S1210	
tel.	kg
3	610
6	1500
12	2500

S1700	
tel.	kg
3,9	1600
5,2	2100
11,7	4200



Meccanismi – Mechanisms – Mécanismes – Antriebe – Mecanismos

Sollevamento S20.40 e V20.40 Hoisting Levage Heben Elevación Elevação			1a	4 m/min	3000 kg	14.7 kW	S20.40 32 kVA V20.40 28 kVA
			2a	20 m/min	3000 kg		
			3a	40 m/min	1500 kg		
			1a	2 m/min	6000 kg		
			2a	10 m/min	6000 kg		
			3a	20 m/min	3000 kg		
Sollevamento S2560 e V25.60 Hoisting Levage Heben Elevación Elevação			1a	7 m/min	3000 kg	18.5 kW	S25.60 38kVA V25.60 33 kVA
			2a	28 m/min	3000 kg		
			3a	56 m/min	1500 kg		
			1a	3.5 m/min	6000 kg		
			2a	14 m/min	6000 kg		
			3a	28 m/min	3000 kg		
Sollevamento V45.60 Hoisting Levage Heben Elevación Elevação			1a	2 m/min	6000 kg	33 kW	V45.60 50 kVA
			2a	20 m/min	6000 kg		
			3a	31 m/min	5000 kg		
			4a	46 m/min	3200 kg		
			5a	60 m/min	2500 kg		
			Carrello Trrolleying Distribution Katzfahren Distribución Distribuição				
2a	25 m/min	6000 kg					
3a	50 m/min	3000 kg					
Rotazione Siewing Orientation Schwenken Orientación Rotação			1a	0 → 0.2	giri/min tr/min rp/min	4.4 kW @ 1200rpm n° 2 x 2.2 kW	
			2a	0 → 0.6			
			3a	0 → 0.9			
Traslazione Travelling Translation Kranfahren Traslación Translação			1a	OP 0 → 5		3.7 kW	
			2a	0 → 20			

Rete elettrica – Réseau – Mains supply – Netzstrom – Red – Rede electrica

400V – 50 Hz



FMgru s.r.l.

via Emilia 11-29010 Pontenure PC ITALY
tel. 0523/510446 ric.cau. fax 0523/510355
www.fmgru.com e-mail: info@fmgru.com

FEM 1.001

2000/14/CE



Documento commerciale non contrattuale
Par tutte le informazioni tecniche riferirsi
alle corrispondenti Istruzioni!

Unverbindliches Vertriebsdokument.
Für technische Informationen, siehe die
entsprechenden Anweisungen.

This commercial document is not legally
binding. For any technical information, please
refer to the corresponding instructions.

Documento comercial no contractual
Para cualquier información técnica,
ver la notición correspondiente.

Code: 15CA37C8DA0	
Ed. / Data	Rev. / Data
1	05.04.03 05.08.03